



Broom Road, Brandon, IP27 9ET

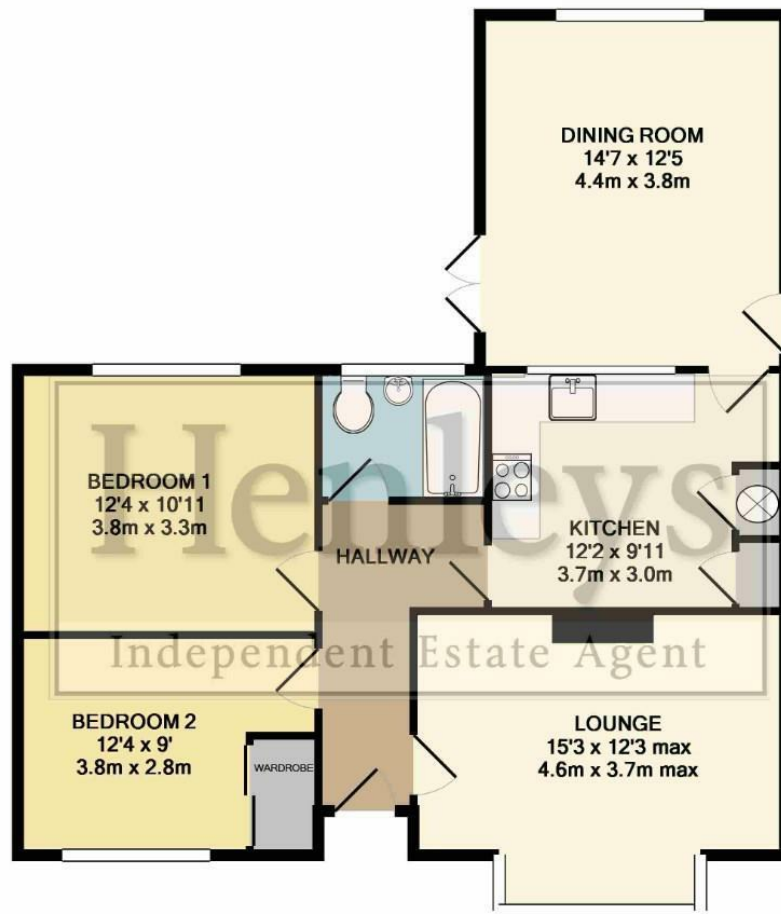
Rent - £1,250 Deposit - £1,442

**** VIEWING ESSENTIAL **** Spacious detached bungalow located in the village of Lakenheath. Only five minutes from RAF Lakenheath and ten minutes from RAF Mildenhall. Benefitting from two double bedrooms, spacious lounge, conservatory, garage and off road parking.

- DETACHED BUNGALOW
- CLOSE TO BOTH BASES
- CONSERVATORY
- 2 BEDROOMS
- GARAGE & PRIVATE DRIVEWAY
- AVAILABLE NOW



Council Tax Band: - EPC Rating: 0



TOTAL APPROX. FLOOR AREA 816 SQ.FT. (75.8 SQ.M.)

Whilst every attempt has been made to ensure the accuracy of the floor plan contained here, measurements of doors, windows, rooms and any other items are approximate and no responsibility is taken for any error, omission, or mis-statement. This plan is for illustrative purposes only and should be used as such by any prospective purchaser. The services, systems and appliances shown have not been tested and no guarantee as to their operability or efficiency can be given
Made with Metropix ©2019

